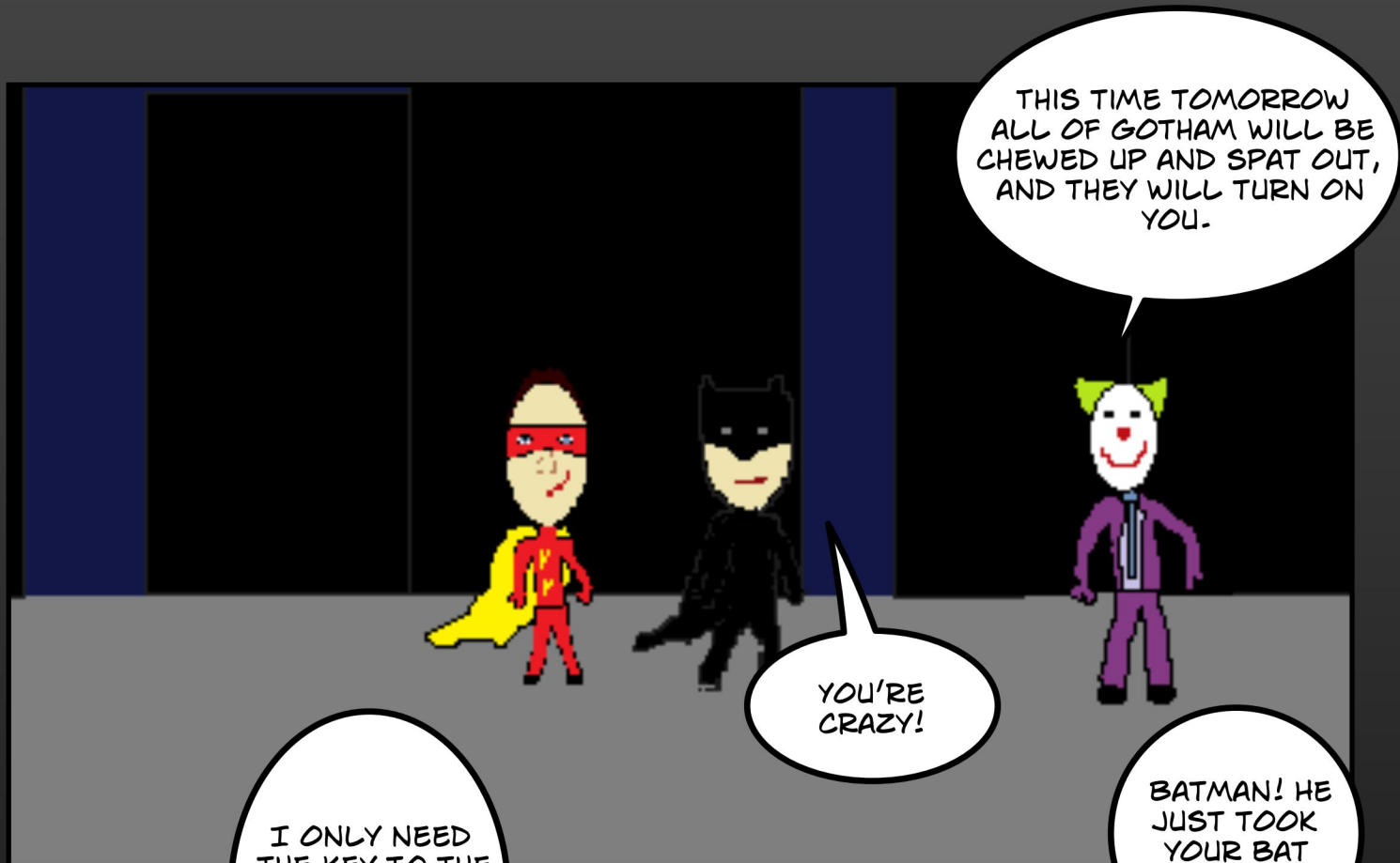
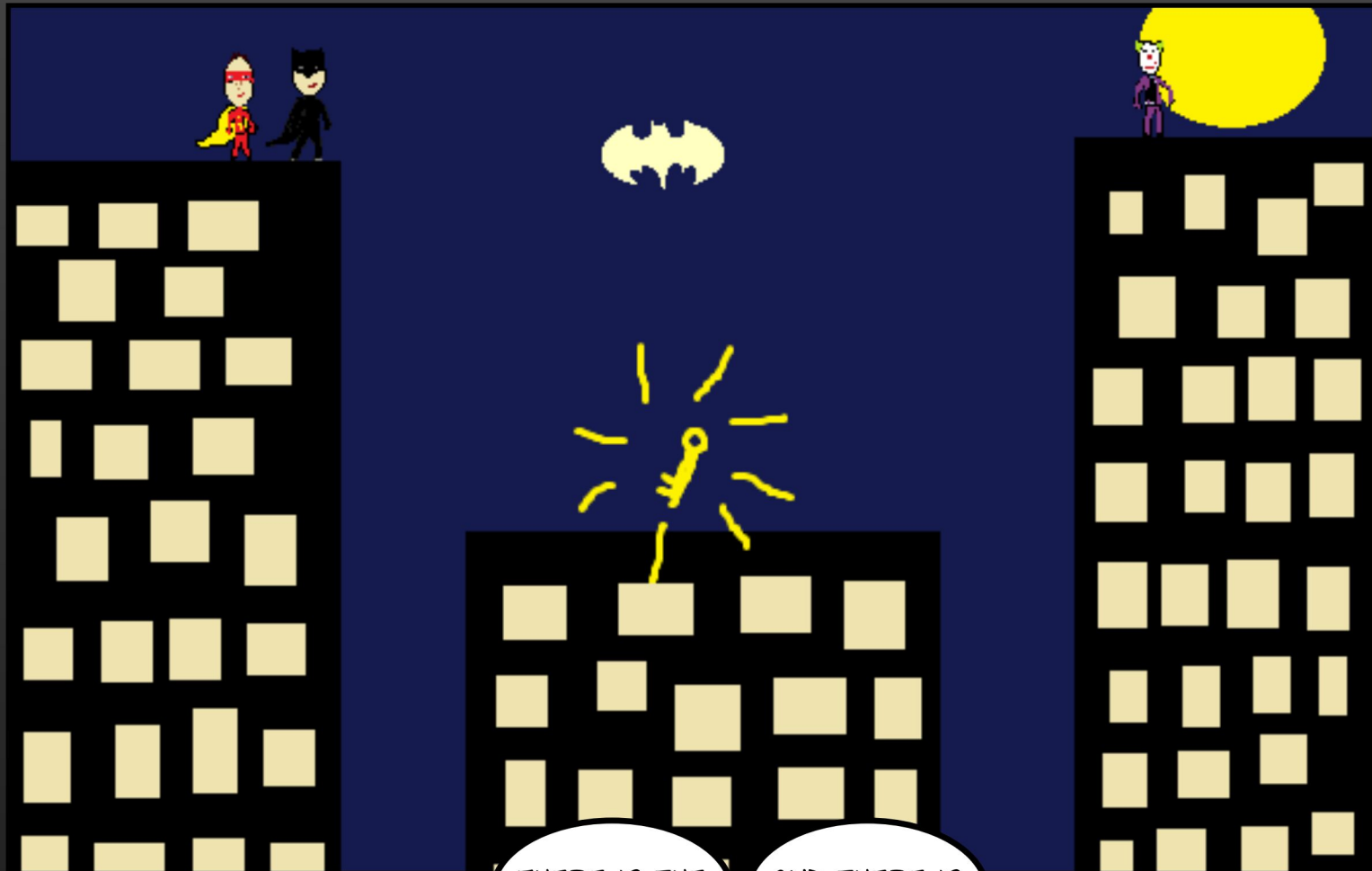


BATMAN

AND

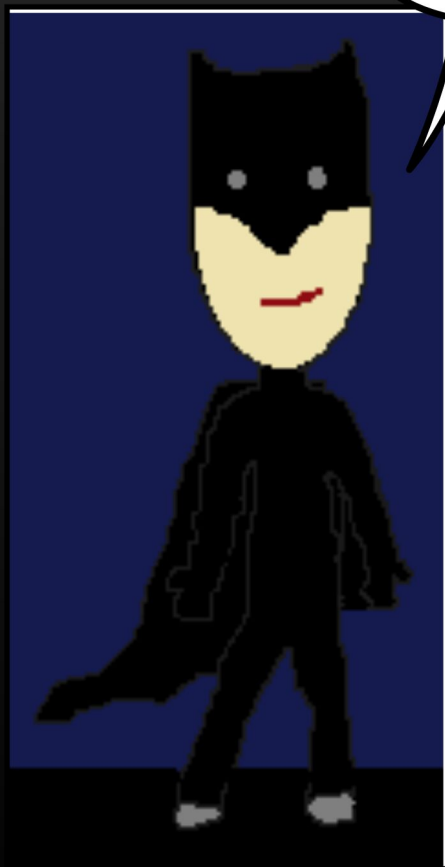
MATHEMAN





THERE IS THE
KEY.

AND THERE IS
JOKER!

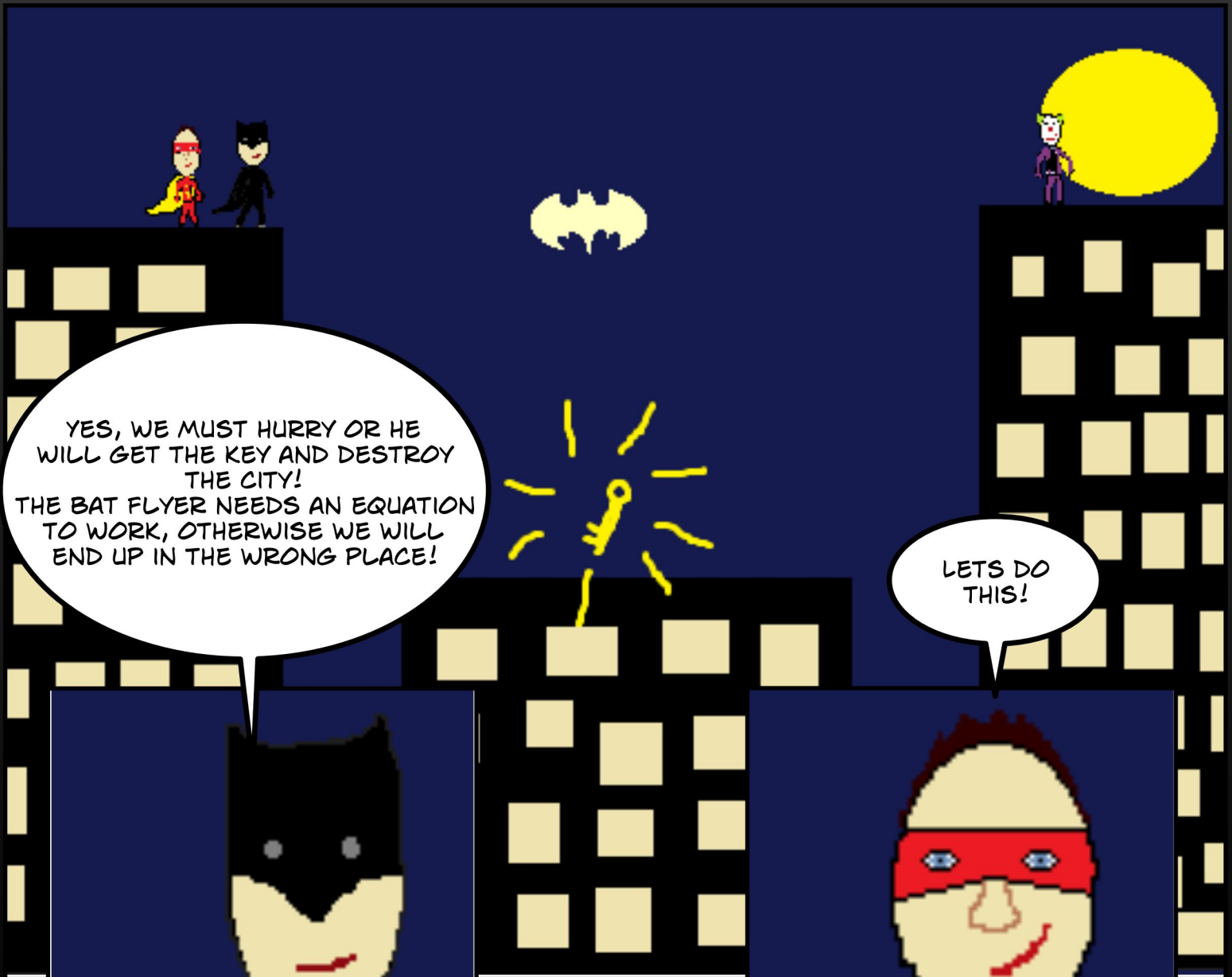




IF WE USE
OUR REVERSE
GRAPPLE BAT
FLYER WE CAN
FLY DOWN TO
THE KEY!

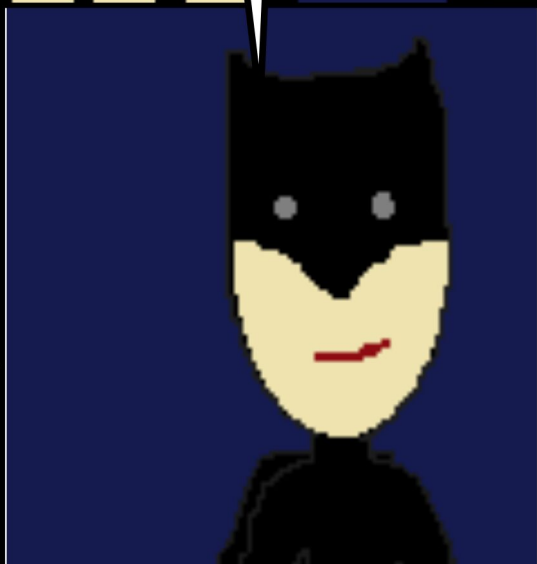


BUT WAIT,
DIDN'T THE
JOKER STEAL
ONE FROM
YOU
YESTERDAY?



YES, WE MUST HURRY OR HE
WILL GET THE KEY AND DESTROY
THE CITY!
THE BAT FLYER NEEDS AN EQUATION
TO WORK, OTHERWISE WE WILL
END UP IN THE WRONG PLACE!

LETS DO
THIS!





THIS BUILDING IS 1000 FT HIGH,
AND THE OTHER BUILDING IS 500
FT HIGH. THE OTHER BUILDING IS
ALSO 300 FT WIDE.

THIS BUILDING IS 500 FEET
HIGHER THAN THE KEY
BUILDING, IT IS ALSO $\frac{1}{2}$ OF
THE OTHER BUILDINGS WIDTH
BUT $\frac{1}{3}$ OF ITS WIDTH. WE
MUST ADD $\frac{1}{2}$ AND $\frac{1}{3}$. WHEN WE
DO WE GET $\frac{5}{6}$. THEN WE MUST
MULTIPLY THE FRACTION BY
THE WIDTH OF THE BUILDING.
 $\frac{5}{6}$ TIMES 300 IS 250. IF WE
CONSIDER THE KEY TO BE THE
POINT (0,0), THAN OUR POINT
IS (-250,500). SINCE THE KEY
IS AT THE POINT (0,0), (0,0)
IS OUR DESTINATION AND THE
OTHER POINT WE WILL USE.





GREAT, SO WE HAVE OUR POINT
(X1,Y1). DOES THAT MEAN WE
WILL USE POINT-SLOPE TO
GET OUR EQUATION?

M

YES, BATMAN IT DOES. WE HAVE
TWO POINTS, SO NOW WE CAN
FIND THE SLOPE WE NEED.
SLOPE IS THE CHANGE IN Y OVER
THE CHANGE IN X.


$$M = \frac{500 - 0}{(-)250 - 0}$$
$$M = -2$$

OUR SLOPE IS -2.



A pixelated illustration of Batman's head and shoulders. He is wearing his iconic black cowl with white eye lenses and a black cape. His face is pale yellow with a small red smile.

NOW WHAT DO WE DO MATH MAN?

A pixelated illustration of a character named Math Man. He has a large yellow head, a red mask with white eye lenses, and a red suit with a yellow cape. The letters 'M' and 'M' are visible on his chest.

NOW WE FIND THE EQUATION. WE WILL USE THE POINT WHERE WE ARE, AND THE SLOPE THAT WE FOUND. THE POINT-SLOPE EQUATION IS $Y-Y_1=M(X-X_1)$.

$$\begin{aligned} Y-(500) &= -2(X-(-250)) \\ Y-500 &= -2(X+250) \\ Y-500 &= -2X-500 \\ Y &= (-2X-500)+500 \\ Y &= -2X \end{aligned}$$

WE MADE IT! BUT WHERE IS JOKER?

A pixelated illustration of Batman's head and shoulders, similar to the first panel.

PERFECT! HERE WE GO!





THE END

SPORT AND GAMES BY ANDRE CORREIA